



Explore Potsdam

TRAVEL MAGAZINE



Living history

**PALACES AS FAR
AS YOU CAN SEE**

OFF TO THE WATERWAYS

Special spots on the banks of the river Havel

THE GERMAN DREAM FACTORY

Babelsberg film history

THE PERFECT PLACE TO MEET

Business and leisure in Potsdam



Welcome to Potsdam!

“Without a care” – that is the headline of Potsdam’s most famous palace, Sanssouci. But it is also a feeling that can be experienced in many places within the city: in the expansive parks which belong to the UNESCO World Heritage as well as in the lively city centre. Here, magnificent baroque facades meet inviting backyards. International art mixes with local street culture. Very close to Germany’s vibrant capital Berlin, yet life in Potsdam runs at a different pace.

The city itself is an island encircled by the river Havel and provides an ideal setting for boating, swimming and waterside strolls. It’s no surprise that Prussian kings felt inspired by this landscape. This is where they indulged their yearnings for faraway lands and created their own Prussian Arcadia.

Potsdam invites you on a journey through Europe: the oranges in Sanssouci Park make you dream of Italy, the red bricks of the Dutch Quarter remind you of Amsterdam. And within the next moment you are part of a fairy tale in the Russian Colony Alexandrovka. Whether by bike, on foot or on the water – Brandenburg’s state capital impresses with a well-developed network of paths with idyllic views of the picturesque river Havel and its lake scenery.

The destination has not only influenced arts, architecture and science in Europe but also the film industry. The world’s oldest large-scale film studio was founded in Potsdam-Babelsberg. To honour Potsdam’s impact and achievements of the last 100 years of making films, the city became Germany’s first UNESCO Creative City of Film.

So, what are you waiting for?!
Be a part of Potsdam’s living history.



Anne Robertshaw

PMSG Potsdam Marketing
and Service GmbH



14

OFF TO THE WATERWAYS



20

THE GERMAN DREAM FACTORY



30

TRAVEL THROUGH POTSDAM WITHOUT BARRIERS

6

THIS IS POTSDAM

8

LIVING HISTORY

- 8 Palaces as far as you can see
- 10 Cecilienhof Country House
- 11 Cultural Highlights
- 12 Potsdam – Come with us on a journey through Europe

14

OFF TO THE WATERWAYS

- 14 Off to the Waterways
- 16 Alter Fritz – Cycling between UNESCO World Heritage Site and river Havel
- 18 Special spots on the banks of the river Havel

20

THE GERMAN DREAM FACTORY

- 20 Babelsberg film history
- 21 More than 75 years of DEFA – the film heritage of the GDR
- 22 From 1899 until today

24

THE PERFECT PLACE TO MEET

- 24 Business and leisure in Potsdam

28

CHRISTMAS IN POTSDAM

- 29 Christmas Markets

30

A CITY FOR ALL

- 30 Travel through Potsdam without barriers

SERVICE

- 32 For your trip to Potsdam
- 34 Arriving in Potsdam
- 35 Imprint

Contents



8

LIVING HISTORY



[183,000]
INHABITANTS

[1,100]
HECTARES
OF WATERSCAPE

[16]
PALACES

UNESCO
WORLD HERITAGE SITE
SINCE
[1990]

UNESCO
CREATIVE CITY OF FILM
SINCE
[2019]

THIS IS
Potsdam
STATE CAPITAL OF BRANDENBURG



Palaces AS FAR AS YOU CAN SEE

If you love palaces you will be spoiled for choices. Potsdam has the highest number of palaces per inhabitant in Germany. With 16 palaces and three historic parklands, history and garden lovers will get their money's worth. Visitors are invited to join lively time travels back into the brilliant era of the Prussian kings and queens. In 1990 the UNESCO officially declared the palaces and parks of Potsdam as World Heritage. The parkland includes **Sanssouci Park with its famous palace** named accordingly, the **New Garden** where world-changing decisions were made and **Babelsberg Park** which is the masterpiece of Peter Joseph Lenné and Prince Hermann von Pückler-Muskau. Apart from parklands there is a lot more that is awaiting to be explored. The entire cultural landscape impresses with its authenticity, uniqueness and the numerous influences from Italy, France and England which merge here.

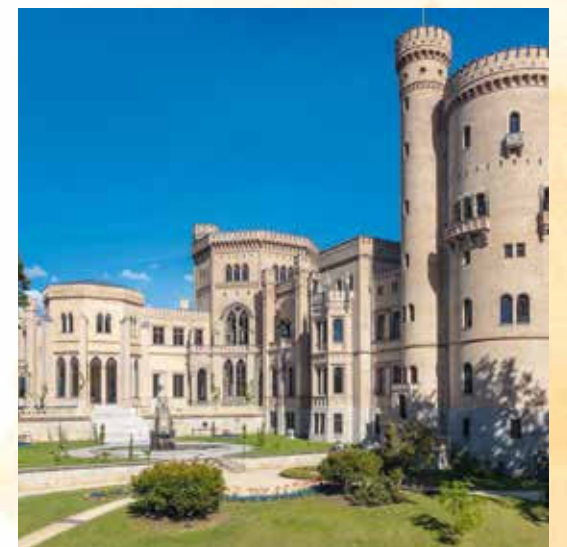
New Palace in Sanssouci Park



Sanssouci Park and Palace



Marble House in the New Garden



Babelsberg Palace and Park

Cecilienhof COUNTRY HOUSE

Cecilienhof Country House is picturesquely embedded in the New Garden which lies at lake Jungfernsee and lake Heiliger See. It extends stunning views across the water even to Peacock Island in Berlin. Johann August Eyserbeck was charged with the creation of the New Garden. The name was programmatic for the abandonment of the old baroque park at Sanssouci. Years later the Prussian landscape architect Peter Joseph Lenné left his mark on the land and reshaped the garden.

The palace was built between 1913 and 1917 in the style of an English country house. Kaiser Wilhelm II had it built for his son Crown Prince Wilhelm and his wife Cecilie. After the collapse of the monarchy, Wilhelm returned to Potsdam in 1923 and was granted the right of residence for life, which had meanwhile

been expropriated by the state. In 1945, the former Crown Prince and his family fled from the approaching Red Army. By the end of World War II, the "Big Three" – the American president Harry S. Truman, the British prime minister Winston Churchill (followed by his successor Clement Attlee), and the Soviet head of state Joseph Stalin met here for the Potsdam Conference. They sealed the fate of Germany and Europe. The border installations of the Berlin Wall that stood not far from the building from 1961 to 1989 were an indirect result of the Potsdam Conference and also a part of the house's history.

Today, the country house can be visited showing the conference and work rooms of the members of the Potsdam Conference.

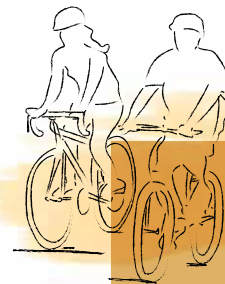
Tip

AUDIO TOURS ALONG THE FORMER BERLIN WALL IN POTSDAM

The audio tours **BARRIER ZONE IN THE PARK LANDSCAPE** and **IN THE SHADOW OF THE IRON CURTAIN** offer moving human stories and escape attempts, while also highlighting other spots along the former border.

Available in the "Potsdam City Guide" app, which can be downloaded free of charge from the Google Play Store and Apple App Store.

**FURTHER
INFORMATION**
potsdam-tourism.com

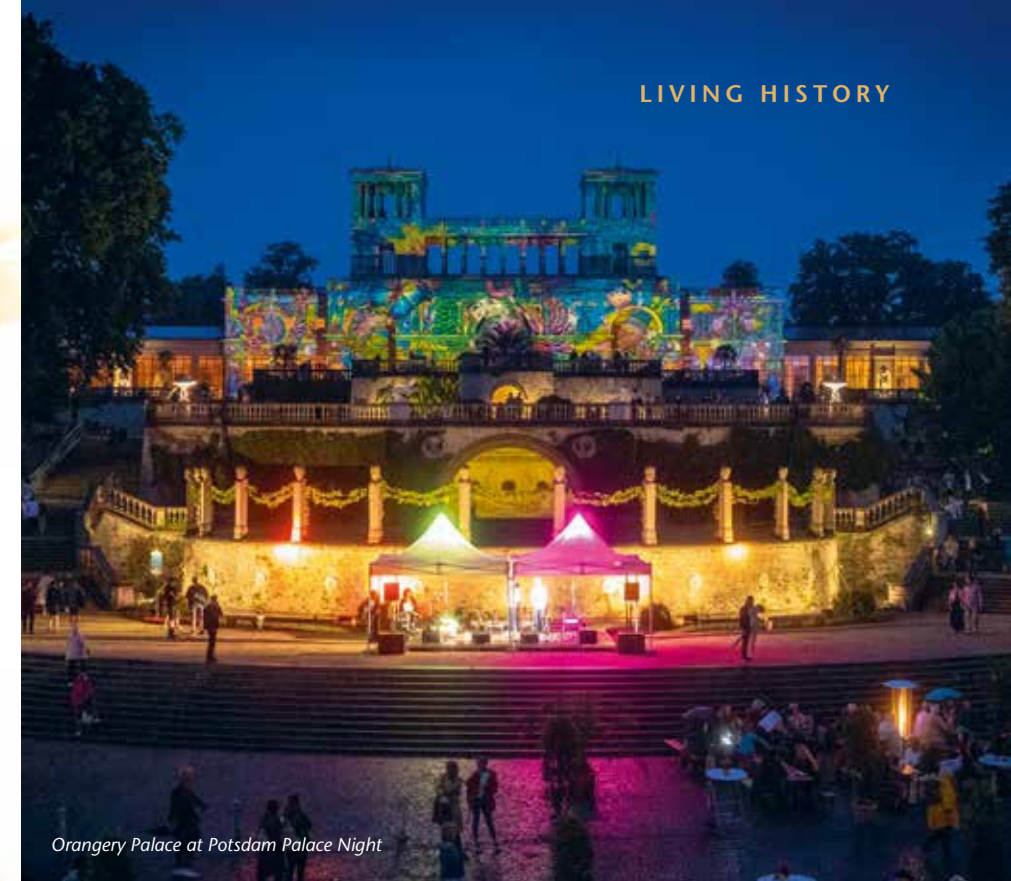


Tip

DISCOVER POTSDAM YOUR WAY

The **Explore Potsdam** brochure contains tips to help you explore Potsdam through self-led tours – whether on foot, by bike, or by paddle boat.

Copies are available in the Tourist Information Centre Alter Markt or in the mobiagentur Potsdam – Tourist Information Centre at main station.



Orangerie Palace at Potsdam Palace Night

CULTURAL HIGHLIGHTS

Exhibition: Impressionism

The Museum Barberini shows impressionist paintings from the extensive collection of Hasso Plattner, the museum's founder. More than 100 masterpieces by Claude Monet, Auguste Renoir and other impressionist and postimpressionist artists are on permanent display.

Potsdam Fleet Parade with Harbour Festival

In April, the harbour presents a programme with music, rides and culinary offerings to accompany the traditional parade of Potsdam's fleet Weisse Flotte.

Sehsüchte International Student Film Festival

At Europe's largest international student film festival, young filmmakers, film industry insiders, and cinema enthusiasts boost their creativity through inspiring films, workshops and discussions.

Music Festival Potsdam Sanssouci

The festival is held annually for three weeks in June featuring about 80 performance set in the UNESCO World Heritage of the Prussian Palaces and Gardens as well as in Potsdam's historical centre and its surroundings.

Potsdam Palace Night

In August, Sanssouci Palace and Park will be the stage for a colourful mix of concerts, theatre, variety shows, and literature.

Christmas Markets

Whether Polish specialities, Dutch customs or Bohemian handicrafts: During the Advent season, the UNESCO World Heritage Site of the Brandenburg state capital offers a fairytale backdrop for its various Christmas Markets.

More Information: potsdam-tourism.com



Cycling through the New Garden



COME WITH US ON A JOURNEY through Europe

The red bricks shimmer in the sunlight and create a striking contrast to the bright blue summer sky.

Pretty gables and open shutters draw you in – into little Amsterdam. Between shops and inviting cafés, we settle down in the Dutch Quarter at a sunny spot and enjoy a chocolademelk with a pannekoek – a traditional chocolate milk and Dutch pancake. Yummy, or “lekker”, as said in the Netherlands. It’s clear we’re not in Amsterdam when, after a short walk, we find ourselves in the setting of a historic Russian village.

Russian singers once resided with their families in these ornately decorated wooden houses. Today we can stroll through the Russian Colony Alexandrovka, laid out like a hippodrome, and feel the spirit of times gone by. The gardens are extensive and contain a considerable stock of old fruit trees. Back in those days, singers needed to have more than just a good voice – they were also expected to have gardening and smallholding experience. We can easily imagine the challenges that came with farming. The singers would climb the nearby Kapellenberg to pray. Services are still held today under the roof of the picturesque onion domes of the Alexander Nevsky Memorial Church. Having ascended one

hill, we immediately climb another. After Amsterdam and Russia, our next destination is Italy. The view is worth the climb. In front of us lies the magnificent palace Belvedere Pfingstberg, which Frederick William IV designed after his trip to Italy – where he was influenced and inspired by the Villa Medici in Rome with its impressive towers, the Villa d’Este in Tivoli with its water features and terraces, and the Villa Farnese in Caprarola with its water cascade. A few more steps and we are rewarded with probably the most beautiful view of Potsdam, across the river Havel and its lake scenery, spreading out before us like a waving blue ribbon. We close our eyes, feel the Brandenburg breeze, and take in the moment. Then we continue our journey through Europe – here in Potsdam.



Dutch Quarter



Russian Colony Alexandrovka

Alexander Nevsky Memorial Church



OFF TO THE Waterways



Paddling around peninsula Hermannswerder

The magic of the Havel wave is best felt when you let it take you away. The wide river Havel and its lakes form a unique water landscape and the largest contiguous inland water sports area in Europe. It offers endless possibilities to discover the island of Potsdam and its surroundings: whether for a few hours in a canoe, with your own boat or even on a leisurely steamboat trip.

The fleet **Weisse Flotte Potsdam** invites you to take boat tours through Potsdam's lake scenery from March to December. Their tours start in the Potsdam harbour nearby the main station (Lange Brücke). All tours leaving here include the "Palace sightseeing tour" – an experience with unique views of the UNESCO World Heritage Site, all the way to Berlin's Peacock Island. Their fleet also includes a hybrid ship, the MS Schwielowsee and therefore allowing you to travel in a more sustainable manner.

The **Potsdam Water Taxi** serves 13 jetty points along the river Havel. Working on a fixed timetable, it connects the two sides of the river Havel – from Glienicke Park in the north to the Strandbad/Forsthaus Templin in the south. Starting out from the stations, countless sights can be easily reached by foot or bike: Cecilienhof Country House in the New Garden, Babelsberg Park and Palace, Schiffbauergasse or the baroque city centre.

A **paddle tour around Hermannswerder** is the perfect balance to a palace visit. Passing the Alte Fahrt, the island Freundschaftsinsel and the buildings in the city centre, the paddle tour leads directly into lake Templiner See. After circling the peninsula Hermannswerder, the view sweeps into bay Neustädter Havelbucht with its eye-catching buildings: the restaurant Seerose and the Steam Engine Building in the shape of a mosque. Public launching points for canoes are located in Schiffbauergasse or in the bay Neustädter Havelbucht. A canoe and pedal boat rental station is located on island Freundschaftsinsel nearby Potsdam main station.



Water Taxi



Explore
Potsdam-
Podcast
ENJOY
THE WATER!

Anne and Claudia chat about the best way to get around, where you can jump in the water and the best cruise tours. Take your swimsuit, your summer hat and enjoy life by the lakeside!



potsdam-tourism.com

Rent a watercraft that suits you

If you want to explore the city independently by water, just rent the watercraft that suits you in one of the marinas or boat rental stations. During the season from April to October there is a wide range: from SUP boards to license-free boats to motor and charter yachts.

MOISL

Boat rental on island Freundschaftsinsel

Moisl provides pedal boats, as well as rowing boats. The rental station is located on the promenade of the Havel branch Alte Fahrt on the north side of island Freundschaftsinsel and is a short 10-minute walk from Potsdam main station.

MARINA AM TIEFEN SEE

Boat rental and yacht charter at Schiffbauergasse

Only 10 minutes from the city centre, the Marina am Tiefen See is located in the Schiffbauergasse. The boat rental and yacht charter offers easy-to-handle sport boats. They can be rented hourly or comfortable holiday yachts by the week.

HUCKLEBERRYS

Raft station at Schiffbauergasse

The raft station Huckleberrys at Schiffbauergasse represents the ideal starting point not just for a day trip, but also for a multi-day holiday adventure on the water. The rafts are qualified for licence-free use and approved for up to eight passengers.

PEDALES

Boat rental at Griebnitzsee railway station

Pedales offers paddlers a range of services from rentals with tour tips and guided tours. In addition to single and double kayaks, 3-seater Canadians are available for hire as well as stand-up paddle boards. All required equipment can also be rented.

TIKI SUP & KANU

SUP and canoe machines at Hermannswerder and Luftschiffhafen

The TIKI SUPs and canoes can simply be taken out of the lockers at peninsula Hermannswerder or Luftschiffhafen after booking online. Only a few minutes later, the SUP or canoe fun on the water can begin, without any elaborate preparations.

Special Spots ON THE BANKS OF THE HAVEL

When the days become shorter, the autumn sun shines a harmonic light onto the cultural and natural heritage. Should you decide to go onto the water, you can savour this interplay from a particularly beautiful perspective. The golden leaves contrasts with the blue ribbon of the river Havel, providing an ideal backdrop for a relaxing raft trip or boat tour on Potsdam's waterscape. For example, you might go through the Glienicke Bridge to see the Italian style Church of the Savior in Sacrow, with its

free-standing bell tower that can be seen from far afield. Or you can follow the flow of the river Havel downstream, from the harbour to bay Neustädter Havelbucht where you'll find the remarkable Steam Engine Building. The water always offers new views of the city: sometimes it is historically inspired vistas created by Prussia's landscape architects, and sometimes you'll make individual, serendipitous discoveries.



THE STEAM ENGINE BUILDING



The imperial sailors' station Kongsnaes on lake Jungfernsee was rebuilt in the Norwegian Dragestil ("dragon style") by architect Holm Hansen Munthe. Emperor Wilhelm II instructed him in 1890. The ensemble consisted of a reception pavilion, a hall known as the "Vente Hall", a boat shed and three residential buildings for staff. Today, the reconstructed buildings house a restaurant and apartments. As early as 1841, the mooring station was used by the Prussian royal family as a starting point for pleasure cruises on the river Havel.

The imperial sailors' station Kongsnaes



The Steam Engine Building

The Neustädter Havelbucht, a bay of the river Havel, is home to **the Steam Engine Building** – a remarkable architectural example of a functional industrial building from the early 19th century. Frederick William IV had the pump station built in Moorish style, meaning it looks more like a mosque.

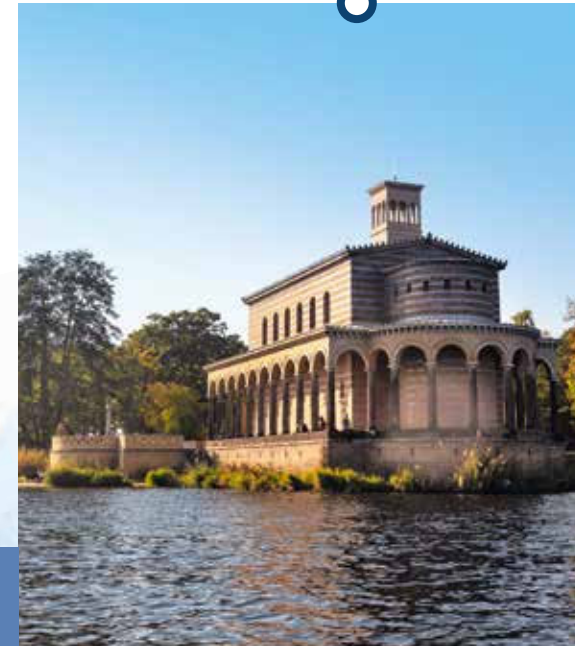
Babelsberg Palace

Babelsberg Palace, built in the English Gothic Revival style, towers majestically over the banks of the river Havel. According to garden architect Prince Hermann von Pückler-Muskau, the palace terraces were intended to appear like "palace rooms under the open sky".



Sacrow Church of the Savior

The **Church of the Savior at Sacrow Port** was built as a place of worship in 1844 in an Italian style with a free-standing bell tower, or "campanile", based on drawings by Frederick William IV. Ludwig Persius was commissioned to design the building. Its style and location unquestionably make it a special feature of the lake landscape that surrounds Potsdam.



Glienicke Bridge



Glienicke Bridge spans the river Havel and also marked the East/West German border during the Cold War. Today the bridge stands as a symbol of unity and an important link between Potsdam and Berlin.



Sanssouci Palace



Square Alter Markt

TOUR INFORMATION

- approx. 2.5 hrs
- approx. 16 km
- Potsdam main station

To download the GPX track:



FURTHER TOURS
potsdam-tourism.com/tours

On the trail of Frederick II, popularly known as Alter Fritz (Old Fritz), you can also delve into the magic of Potsdam's palaces and gardens. The rich UNESCO World Heritage Site still maintains the magnificence of past epochs. It narrates the stories of the former rulers' aspirations and still takes the visitors' breaths away with its wonderful diversity and majesty.

The cycling tour begins at Potsdam's historical city centre i.e. at square **Alter Markt**. Old Fritz had it once redesigned based on the architecture of an Italian square. Overlooking street **Breite Straße**, you pass by the Steam Engine Building, which resembles a mosque, in the direction of **Sanssouci Park**. Watching **Charlottenhof Villa** you can feel the hints of Italy. You can already inspect the stunning cupola of the **New Palace** in the distance.

Frederick II used the palace as a stately guest house and intentionally staged it, while Sanssouci Palace remained his very private summer residence. As per Frederick II's own wish, his grave is located on the upper terrace of the palace right next to his beloved dogs. To this day his grave is regularly decorated with potatoes by visitors. This is done in memory of him as he campaigned for the cultivation of potatoes and gave a desired largescale cultivation of potatoes a chance.



The imperial sailors' station "Kongsnes"



New Palace



Dutch Quarter

Alter Fritz CYCLING BETWEEN UNESCO WORLD HERITAGE SITE AND RIVER HAVEL

Tip ALWAYS WELL INFORMED

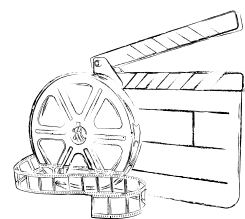
Exciting literature on Potsdam's UNESCO World Heritage is available at the Tourist Information Centre Alter Markt or at the mob:agentur Potsdam – Tourist Information Centre at main station.

The cycling tour continues from the palace along the historic Voltaireweg passing by the **Russian Colony Alexandrovka**, while riding towards the **New Garden**. Frederick's successor, Frederick William II, set up his own summer residence at Marble House on the grounds of the New Garden and on the shores of lake Heiliger See. The gardener Johann August Eyserbeck was responsible for the design of the New Garden.

From here the path brings you back to the city centre, passing by the **Cecilienhof Country House** which is famous for hosting the Potsdam Conference in 1945. Once in the city centre, the **Dutch Quarter** with its cosy atmosphere ensures a relaxing stop to your tour before returning to Potsdam main station.



Babelsberg FILM HISTORY



The city's film history is so fascinating that it has its own museum. Originally built as an orangery, the building provided winter quarters for the Mediterranean plants from the adjacent pleasure garden. Under Frederick William I, the building was converted into stables for the royal riding horses. The building was given its present form by the Sanssouci Palace's master builder, von Knobelsdorff, in the 18th century.

Since 1981, this baroque building in the historic centre has been home to the Film Museum Potsdam as well as a restaurant. There is also an exhibition, "The Dream Factory – 100 Years of Film in Babelsberg" and several of temporary cinema-related exhibitions.

Additionally, the former stables house a cinema. There, cinematic classics and current releases are being shown as well as silent movies which are accompanied by the Welte cinema organ. The growing collection on Babelsberg film history is also a treasure trove for scholars and exhibition organisers.

MORE THAN 77 YEARS OF DEFA

THE FILM
HERITAGE
OF THE GDR

More than 77 years ago, on 17th of May 1946, the "Deutsche Film AG" (DEFA) was founded in Babelsberg, Potsdam. The 46 years of its existence have seen the making of about 700 feature films, around 2,500 documentaries and short films, and 950 animated films – including classics such as "Die Legende von Paul und Paula" (The Legend of Paul and Paula), "Solo Sunny", "Die Geschichte vom Kleinen Muck" (The Story of Little Muck), and Czechoslovak/East German co-production "Tři oříšky pro Popelku" (Three Hazelnuts for Cinderella).

[700]
FEATURE FILMS

[950]
ANIMATED
FILMS

[2,500]
DOCUMENTARIES AND
SHORT FILMS



Tip GUIDED WALK

Stories about UFA film legends, famous architects, and the dramatic history of the district are the focus of the guided tour, **BABELSBERG – FILM STARS, VILLAS, HISTORY.** Imperial building councils planned the Neubabelsberg villa colony in 1871. Only the rich and famous could afford to live here. Because of the film studios, many actors moved to this area.

The tour can be booked for groups up to 15 people all year round.

MORE INFORMATION
potsdam-tourism.com/groups

FROM 1899

UNTIL TODAY

1899 1912 1917 1927 1933 1946 1953 1965 1992 2012 2017 2019

"Deutsche Bioskop", a film production company, was founded in 1899 and started work on a glass studio for film productions in Potsdam Babelsberg the same year.

On the 12th of February 1912, the camera rolled for the first time in Babelsberg – Danish director Urban Gad was shooting **Der Totentanz** (The Dance of the Dead) starring Asta Nielsen, thus marking the birth of Studio Babelsberg, the oldest film studio in the world.

"Universum-Film AG", or UFA for short, was founded on the 18th of December. It is currently one of the largest production companies in Europe and has played a major role in German and international film history.

Fritz Lang released the film **Metropolis** – a monumental expressionist silent film. This science-fiction masterpiece was the first feature-length film of its genre and the first film to belong to UNESCO's world documentary heritage list.

After the Nazis took power in 1933, the "Ministry for Popular Enlightenment and Propaganda" commissioned a number of Nazi-propaganda pictures. Film-makers like Fritz Lang or Billy Wilder and film stars like Marlene Dietrich leave Germany to try their luck in Hollywood.

On the 17th of May, the "Deutsche Film AG", DEFA for short, was founded in Babelsberg. The studio became the exclusive location for feature film production in the GDR and, with about 2,500 employees, advanced to one of the largest employers in the region.

The first feature film, **Die Mörder sind unter uns** (The Murderers Are Among Us), by Wolfgang Staudte and starring Hildegard Knef and Ernst Wilhelm Borchert, was released.

With almost 13 million viewers, **Die Geschichte vom kleinen Muck** (The Story of Little Mook) was one of the greatest successes in DEFA film history to date. This was followed in later years by **Die Söhne der großen Bärin** (The Sons of Great Bear, 1966) with 9.42 million viewers, **Heißer Sommer** (Hot Summer, 1968) with 3.44 million viewers and **Die Legende von Paul und Paula** (The Legend of Paul and Paula, 1973) with 3.29 million viewers.

1965/66 were years of great cultural restriction. Many GDR filmmakers were radically curtailed in their artistic and political freedom. Films such as **Spur der Steine** (Trace of Stones, 1966) by Frank Beyer – with Manfred Krug in the leading role as foreman Hannes Balla – showing the abuses in the construction sector and planned economy were among the 12 films banned from screening after their premiere.

In August 1992, the Treuhand persuaded the renowned French group Compagnie Générale des Eaux (today: Vivendi Universal) to take over the former DEFA film studio in Babelsberg. "Studio Babelsberg GmbH" was founded in the same year and successfully established itself on the market. The film studio was operating nationally and internationally as "Studio Babelsberg AG" from 2004, both as a production service provider and as a producer or co-producer. The next three decades saw the production of international successful films such as **Inglourious Basterds** and Jim Knopf, and series such as **Homeland**, **Babylon Berlin** and **Dark**.

In 2012, Studio Babelsberg celebrates its 100th anniversary. In honour of this event, the Berlinale 2012 presented a special series: "Happy Birthday, Studio Babelsberg".

Potsdam became one of twelve specialised digital hubs in Germany – and now has a centre of excellence focused on media technology. This means digital innovations in the field of film, television, and new media are now driven centrally from Potsdam.

Potsdam became the first **UNESCO Creative City of Film** in Germany.

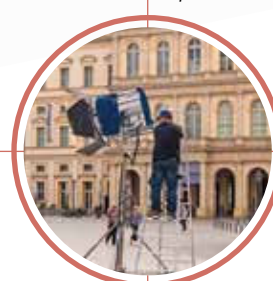


Water tank at Studio Babelsberg

THE COUNTDOWN was a Potsdam invention!

Fritz Lang invented the countdown in his silent science-fiction film, **Frau im Mond** (Woman in the Moon), which was also produced by UFA: "When I was filming the rocket launch, I said to myself that if I were to count – one, two, three, four, ten, fifty, one hundred – then the audience wouldn't know when the rocket is about to launch. But if I count backwards – ten, nine, eight, seven, six, five, four, three, two, one, zero! – they will get it," Lang explained.

The production of entertainment still remained the Studio's main function, in order to distract the German audience from the terrors of war. The stars of the time are Zarah Leander, Heinz Rühmann and Hans Albers.



Film shooting at square Alter Markt

Main entrance Studio Babelsberg



ALFRED HITCHCOCK

was still unknown at the time when he worked as an assistant director at Studio Babelsberg:

“EVERYTHING I NEEDED TO KNOW ABOUT FILM-MAKING I EARNED IN BABELSBERG.”

Meet IN POTSDAM

YOUR CITY FOR MEETINGS,
INCENTIVES, CONFERENCES
AND EVENTS

Potsdam is a great destination for your next event. It is well connected to the international Berlin Brandenburg Airport BER and only a short train ride away from Berlin main station. More than 48 event locations, including 13 conference hotels, provide well equipped meeting facilities.

If you are looking for a special venue, you can choose a historic palace for rent like the Orangery Palace in Sanssouci Park. About 40 scientific institutions located in and around Potsdam have already discovered the city's creative potential. The Potsdam Science Park is one of the most important science locations in the Berlin-Brandenburg region. Due to its rich cultural diversity and locations right at the shores of the river Havel, Potsdam offers you also many options for tours and activities accompanying your event.

Music Festival Potsdam Sanssouci



WE SET YOU UP

The Potsdam Convention Office is the central contact for your event planning in the state capital of Brandenburg. Our team operates in a large local network and support the organisation of your event free of charge.

The Convention Office Potsdam

- » obtains quotes from conference hotels and event locations
- » organises supporting itineraries, gala evenings and much more
- » arranges numerous local service providers such as bus companies, catering, event suppliers, florists, artists, etc.

Are you looking for the right location or the right supporting itinerary?

Our team is looking forward to receiving your enquiry and will be happy to assist you with the organisation of your event.

Potsdam Convention Office
PMSG Potsdam Marketing
and Service GmbH
+49 (0)331 275 58 80
info@mice-potsdam.com
mice-potsdam.com



Discover Culture

Clear your head after a long meeting and take a deep breath. Discover the city with your team and get new impulses for the next workshop. Potsdam's cultural heritage inspires. Prussian kings have implemented great ideas here. Take a look behind the palace facades on a guided tour or explore the city! Qualified guides will take you on a discovery tour through the famous Sanssouci Palace or along stunning baroque facades in the historic city centre.



Teambuilding

Our local network offers you many opportunities to make your team event something very special. Feel the power of the wind during a sailing trip on lake Templiner See or explore Potsdam on a geocaching tour. Balance up in the air on ropes. A cycling tour takes you to hidden places with beautiful vistas along the cultural landscape. This is where team building emerges.



Experience Film History

Would you like to stand behind the camera, do a stunt training or listen to the unique Welte Cinema Organ? Here you will find a multitude of possibilities to create a supporting itinerary around film making in Potsdam. The city has been and still is well positioned in the national and international film industry. That's why international stars like Kate Winslet, Tom Hanks and George Clooney are making films in Potsdam.

Feel Water

Potsdam is an island. Why not plan the gala event on a boat? Some hotels have their own jetty and the harbour in the city centre offers a fleet that suits your event. Would you like to try something new? Then book a StandUpPaddling Tour and explore the most beautiful side of Potsdam from the water. The river Havel invites you to get to know the idyllic waterside by Water Taxi, historic steamer, event float or even paddling in a canoe.



Culinary Arts

A culinary journey through Potsdam is also a journey through history. Immigrants from other European regions came to Potsdam over the centuries and brought their traditional eating habits with them. In Potsdam they merged into a rich cuisine with many different influences. Try Dutch Poffertjes or Pannekoeken, Russian Pelmenis or French onion soup. If you'd rather get creative in the kitchen, why not take part in a cooking event?



FURTHER INCENTIVES AND ITINERARIES
mice-potsdam.com

Christmas IN POTSDAM

Orangeries, Pelmeni, Sinterklaas – It is the European esprit that characterises Potsdam. People from all over Europe came to the residential city of the Hohenzollern dynasty over the course of time, and with them its buildings and culture. Especially during the Advent season from the end of November until Christmas, the European influences can be felt all over the city. Then Bohemian handicrafts meet Finnish mulled wine, Dutch Sinterklaas meets Polish starry magic. A visit to Potsdam is like a journey through Europe.

MORE INFORMATION
ABOUT CHRISTMAS MARKETS
potsdam-tourism.com/christmas



Explore
Potsdam
Podcast

CHRISTMAS TIME IN POTSDAM

It's the most wonderful time of the year. Have you ever heard of the German Christmas tradition, that you have to clean your shoes and put them outside your front door? In this episode, Anne and Vicky will tell you what it's all about. They are also talking about local traditions, Christmas Markets and favourite film fairy tales produced in Potsdam-Babelsberg.



potsdam-tourism.com

CHRISTMAS IN POTSDAM



Christmas Markets

The **Christmas Market "Blauer Lichterglanz"** in the historic city centre provides a variety of stalls with Christmas food and drinks as well as traditional gifts. With its fairytale stage and a ferris wheel it offers great fun for everyone.



The **Bohemian Christmas Market** traditionally takes place where Bohemian weavers once settled. Craftsmen, traders, artists and innkeepers present Bohemian traditions on the square Weberplatz next to the Church of Peace in Babelsberg. The Bohemian crystal fairy and Santa Claus also mingle with the visitors.



The **Polish Christmas Market** on the Kutschstallhof celebrates Polish traditions with regional artists and craftsmen. Traditional foods are served such as "pierogi", "barszcz" and "bigos". Events include Polish choir and classical music performances.



The **Dutch Christmas Market** in the Dutch Quarter displays vendors selling Dutch specialities and musicians playing traditional Christmas music. The celebrations include theatre performances for children on a fairytale stage. The Dutch Santa Claus "Sinterklaas" enters Potsdam traditionally by ship and rides to the market through the city on horseback.



The romantic Christmas Market in the illuminated **Belvedere Pfingstberg** attracts visitors with stalls of all sorts of handicrafts and culinary delights around the water basin inside the castle. In addition visitors can expect a selection of spirits and regional delicacies outside the palace in the romantic gardens. For the children the Moorish Cabinet is transformed into a fairytale room.



You can feel comfort and contemplation when you enter the **Russian Christmas Market** in the Colony Alexandrovka. Regional handicrafts are on offer at the market stalls, with Russian music playing. Away from the pre-Christmas hustle and bustle, a warming campfire invites you to enjoy delicious mulled apple wine or specialities like tea from the samovar. Children can listen to Russian fairytales and stories.

TRAVEL THROUGH POTSDAM

without barriers

A CITY FOR EVERYONE

Architecture and landscape, history and lifestyle – all of this joins together in Potsdam, right to this day. And the good thing about it: Each person can individually experience this interplay. Everyone can participate.



TINA DENNINGER, PHD
A representative for people with disabilities of the state capital Potsdam

Tina Denninger is Potsdam's representative for people with disabilities. With a doctorate in sociology, she is assigned the task of advocating equal participation and co-determination and accessibility in Potsdam. "My goal is to promote inclusion, participation

and accessibility in Potsdam. Potsdam should be a city where everyone can live together equally and free of obstacles. Potsdam is such a beautiful, diverse, cultural city, and it should be equally liveable for all citizens," says Tina Denninger.

And this is what a day or weekend in Brandenburg's state capital could look like. Each person determines their individual pace.

ALWAYS IN THE SLIPSTREAM ...

Cycling? No problem. Tired legs are welcome on tandemtours' guided tandem tour of the city. Because slipstream is guaranteed. And of course: Enquiries are welcome. After all, it is the general manager who will be showing you his favourite places in the city. Curiosity pays off!



RESHAPING THE WORLD

Yes, you read that right. The "Potsdam Agreement" that was adopted at Cecilienhof Country House laid the foundation for the reshaping of the world after 1945 in the middle of the New Garden. A true oasis without distractions. The magnificent special exhibition links world history with personal stories.



ONLY PARIS EXHIBITS MORE MONET

"We feel the wind on our skin and the temperature of the water when we watch Monet's sailing boats on the Seine," is how Hasso Plattner, patron and founder of the Museum Barberini, describes the paintings in his collection. View, absorb. Impressionists open the heart.



A VIEW TO WARM UP

Wow, so much space. Three dry saunas, well-tempered relaxation areas and a garden above the city's rooftops. This is a wonderful place to relax. The blu Saunawelt shows photos of the historical city. "Immerse yourself in Potsdam – art in the swimming bath" crowns this day.

Tip

We recommend **ACCESSIBLE TOURS**
MORE INFORMATION
brandenburg-tourism.com/barrier-free



TIME FOR A LUNCH BREAK?

Then hop on the Water Taxi and take off to the city centre! Oh, the taxi follows a timetable. That's how things are here in Prussia. However, punctuality is rewarded. Landlubbers take the bus and then continue to the city centre by tram.



FANCY A POT OF COFFEE?

The cafés and restaurants at square Alter Markt are a great place to stop and enjoy a meal – without hurrying. Afterwards, the tram is already waiting for discover Potsdam's bathing and sauna landscape – the blu.



For your trip TO POTSDAM

We support you in preparing your trip.

Are you planning your next trip? Then you've come to the right place with us as your Potsdam experts! By phone or mail, our Service Centre Team will answer all your questions regarding your stay in Potsdam.

 **SERVICE CENTRE**
+49 331 27 55 88 99
info@potsdamtourismus.de

 **RESERVATIONS
AND TICKETS**
potsdam-tourism.com

 **GROUP TRAVEL**
+49 331 27 55 85 0
gruppen@potsdamtourismus.de

 **CONVENTION OFFICE**
+49 331 275 58 80
info@mice-potsdam.com

 **MORE INSPIRATION
AND PODCAST**
potsdam-tourism.com

Recommendations for your trip

By the water, in the middle of the city or with the dog? We will find the right accommodation for you. Would you rather go to a concert or an exhibition? For events, we ensure the best seating and book all your tickets. Get inspired at home? We'll send you the right information.



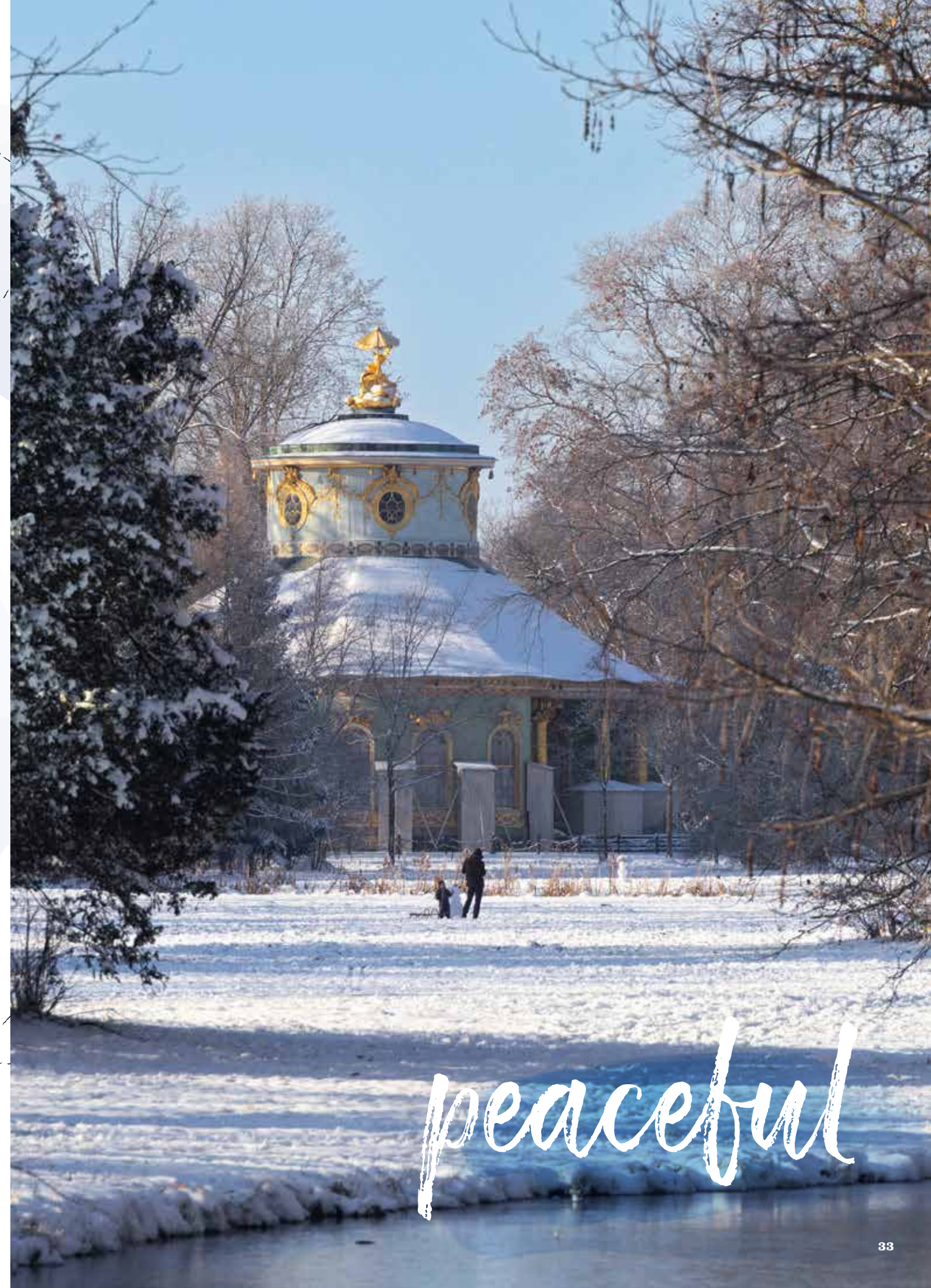
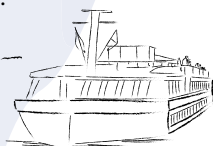
 **TOURIST INFORMATION
CENTRE**
Am Alten Markt
Humboldtstraße 2
14467 Potsdam

mobiagentur Potsdam
in the main station
Friedrich-Engels-Straße 99
14473 Potsdam

Enjoy Potsdam

We offer comprehensive on-site services so that you can really enjoy your time in Potsdam. We take care of the ticket for palaces and boat trips, offer the right city tour and find you the best route by public transport.

  **SOCIAL MEDIA** @explorepotsdam



Arriving AT POTSDAM

The public transport system of Potsdam is part of the greater Berlin area. Potsdam main station is connected to the Intercity and regional transport network of Deutsche Bahn. It takes about 30 minutes to get from Berlin to Potsdam by train or S-Bahn. There are also train and bus connections to the nearby Berlin Brandenburg BER airport. In the city itself, buses and trams run every minute. Potsdam is located within the Berlin motorway ring and is connected to all major motorways.

Potsdam Main Station

THE PERFECT STARTING POINT TO EXPLORE POTSDAM

MOBIAGENTUR POTSDAM



The **mobiaagentur** brings together all mobility offers and services of public transport. The integration of the Tourist Information Centre enables customers to be informed about all tourist services and bookings of the state capital Potsdam at one central location.

Our Service:

- » Individual advice on how to make the most of your stay
- » Booking of hotels, guesthouses, private accommodation and youth hostels in this area
- » Offers such as the tourist ticket Berlin WelcomeCard – Potsdam Edition
- » Arrangement of sightseeing tours and thematic city tours
- » Souvenirs, literature and postcards from Potsdam and its surroundings as well as Berlin
- » Ticket booking for events in this area

BIKE RENTAL

The best way to explore the city is by bike. At Potsdam main station you will find nextbike contactless rental service as well as Pedales rental station. Pedales offers a variety of bikes: city bikes, mountainbikes, e-bikes, Tandems, children's bikes, cargo bikes and bike trailers. The Tourist Information Centres of Potsdam are the best providers for maps and tour inspiration.

CITY SIGHTSEEING

There are several bus tour providers like Alter Fritz, Kaiser-Tour or City Circle which offer sightseeing tours through Potsdam. It is the perfect way to discover the former Prussian residence city without stress and within a short time. Some of the tours are combined with guided walking tours. Via the "hop-on hop-off" sightseeing tour you can explore all the highlights and remain completely flexible.

PUBLIC TRANSPORTATION

Get in, sit back and discover the city. With the tourist lines, you can experience Potsdam by bus or tram and reach the world-famous palaces, parks and sights very quickly. All tourist lines run via Potsdam main station and at least every 20 minutes during the day.

Tip

Berlin Welcome Card Potsdam Edition



This tourist card includes travel on all Potsdam and Berlin related public transport as well as discounts on up to 200 top attractions.



The Berlin Welcome Card – Potsdam Edition is available for 48 hours, 72 hours, 72 hours plus free entry to the Museum Island Berlin, 4 days, 5 days and 6 days.

MORE INFORMATION
[potsdam-tourism.com/en/
plan-your-stay/
berlin-welcomecard](https://potsdam-tourism.com/en/plan-your-stay/berlin-welcomecard)



Gate Brandenburger Tor Potsdam

IMPRINT

PUBLISHER
PMSG Potsdam Marketing
and Service GmbH
Babelsberger Straße 26
14473 Potsdam

**EDITORIAL
DEPARTMENT**
PMSG

CONCEPT & LAYOUT
MÖLLER PRO MEDIA®
GmbH

PRINT
MÖLLER PRO MEDIA®
GmbH

EDITORIAL DEADLINE
December 2022

PHOTOS

Cover: PMSG SPSP Julia Nimke, p. 2-3: PMSG Julia Nimke, p. 3: Karoline Wolf, p. 4 top left: PMSG Nadine Redlich, middle right: PMSG André Stiebitz, bottom left: PMSG Christoph Creutzburg, p. 5: PMSG SPSP Julia Nimke, p. 6-7: PMSG André Stiebitz, p. 8-9: PMSG SPSP Julia Nimke, p. 9 top, middle, bottom: PMSG SPSP André Stiebitz, p. 10-11: PMSG SPSP André Stiebitz, p. 12-13: PMSG André Stiebitz, p. 14: PMSG Nadine Redlich, p. 15-21: PMSG SPSP André Stiebitz, p. 22 left: Studio Babelsberg AG, p. 22-23 top, PMSG André Stiebitz, p. 23 bottom left, right: PMSG André Stiebitz, p. 24: PMSG SPSP André Stiebitz, p. 25: PMSG Steven Ritzer, p. 26 top left: PMSG Sophie Fahrendorff, middle: PMSG Nadine Redlich, bottom: PMSG André Stiebitz, p. 27: PMSG André

Stiebitz, p. 28-29: PMSG Benjamin Genz, p. 30 top: bottom Landeshauptstadt Potsdam Robert Schnabel, p. 31 top left, right, middle left: PMSG SPSP André Stiebitz, middle right: PMSG Christoph Creutzburg, bottom right: blu baedbetriebe Alena Süder, p. 33: PMSG SPSP André Stiebitz, p. 34: PMSG André Stiebitz, p. 35: PMSG Julia Nimke

Subject to change. In the texts, grammatically masculine personal designations apply equally to persons of each gender.

The mentioned „mobiaagentur Potsdam“ was funded by the federal government and the state of Brandenburg within the framework of the joint task „Improvement of the regional economic structure – GRW infrastructure“.



